

PACKING PLATE

TYPE EB6113

BASE PER PRESSOSTATO

TIPO EB6113



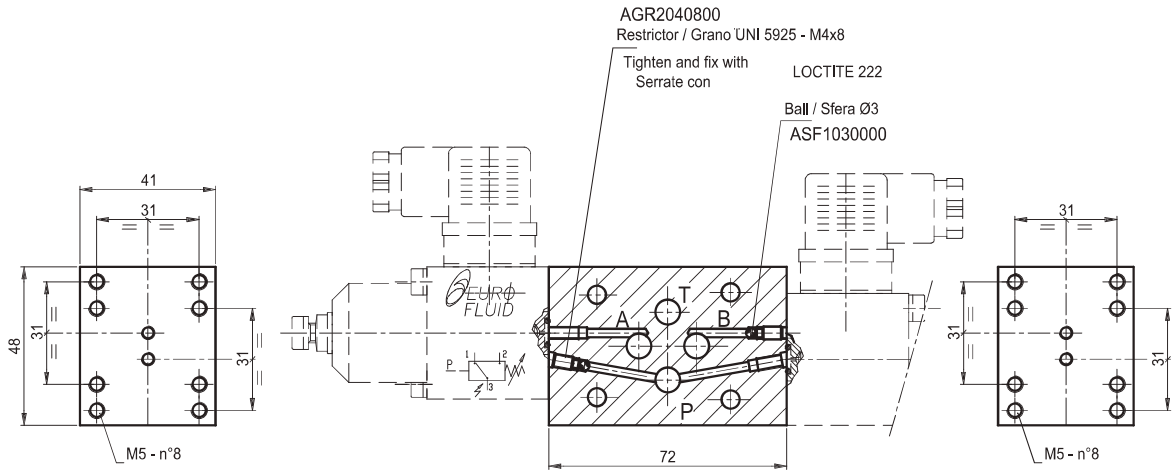
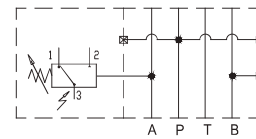
66

Packing plate CETOP3 for pressure switche type EB6113. Weight= 1 Kg
 Base di collegamento CETOP 3 con attacco multiplo per pressostato tipo EB6113
 Peso = 1 Kg

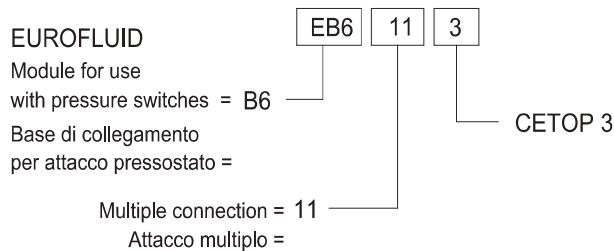
NOTE: The plate is equipped of the following commercial parts:
 N° 4 O-Rings 108 - 70 Sh
 N° 3 Restrictor UNI 5925 - M4 x 8
 N° 3 Balls Ø3

NOTA: La base viene fornita completa dei seguenti commerciali:
 N° 4 O-Rings 108 - 70 Sh
 N° 3 Grani UNI 5925 - M4 x 8
 N° 3 Sfere Ø3

Hydraulic symbol schema idraulico



Ordering code / Esempio di ordinazione:



PACKING PLATE
 BASE PER PRESSOSTATO



PACKING PLATES FOR PRESSURE SWITCHES

TYPE EB6...3 AND EB6...5

67

BASI DI COLLEGAMENTO PER ATTACCO PRESSOSTATO

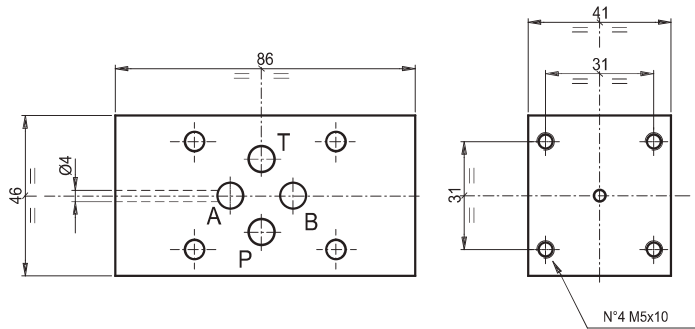
TIPO EB6...3 E EB6...5

Packing plates CETOP3 for pressure switches type EB6...3

Base di collegamento CETOP 3 per attacco pressostato

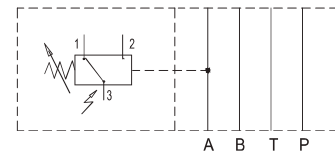
Weight = 1 Kg

Peso= 1 Kg



Type Tipo	Ports Utilizzi
0	A e B
1	A
2	B
3	Side Lato B P e T Side Lato A
4	Side Lato B P
5	T Side Lato A
6	P e P

Hydraulic symbol / schema idraulico
type / tipo EB613



Ordering code:

Esempio di ordinazione: EB6 * 3

EUROFLUID

Module for use
with pressure switches = B6

Base di collegamento
per attacco pressostato =

CETOP 3

0-1-.....6

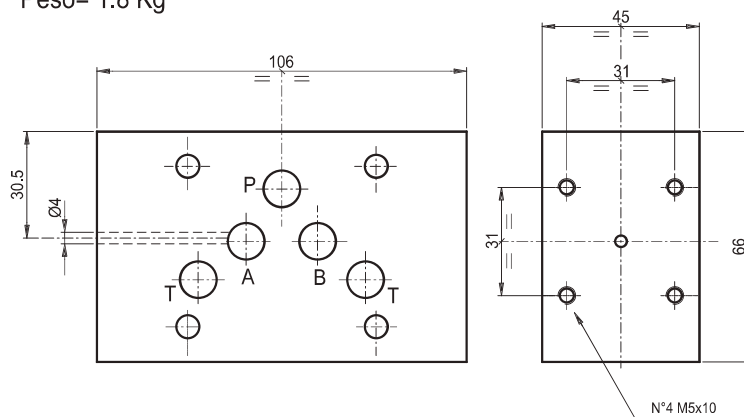
= See list / Vedere tabella

Packing plates CETOP5 for pressure switches type EB6...5

Base di collegamento CETOP 5 con attacco pressostato

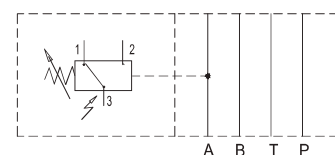
Weight = 1.8 Kg

Peso= 1.8 Kg



Type Tipo	Ports Utilizzi
0	A e B
1	A
2	B
3	Side Lato B P e T Side Lato A
4	Side Lato B P
5	T Side Lato A
6	P e P

Hydraulic symbol / schema idraulico
type / tipo EB615



Ordering code:

Esempio di ordinazione: EB6 * 5

EUROFLUID

Module for use
with pressure switches = B6

Base di collegamento
per attacco pressostato =

CETOP 5

0-1-.....6

= See list / Vedere tabella