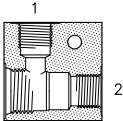
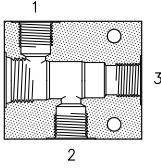
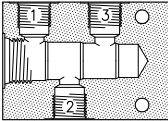
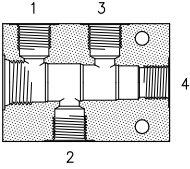
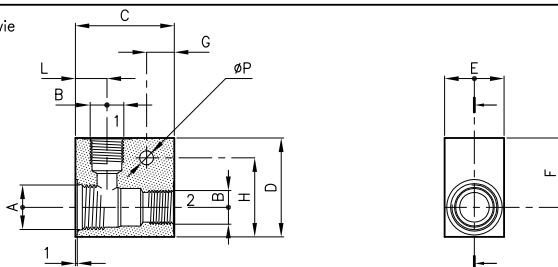


Questa serie di corpi, realizzati in lega di alluminio anodizzato e in acciaio zincato, comprende tutte le versioni standard normalmente disponibili. A richiesta possono essere forniti con utilizzi diversi.

Per la scelta degli utilizzi fuori standard consultare Tabella 17.010 (Utilizzi tipo D - I - S).

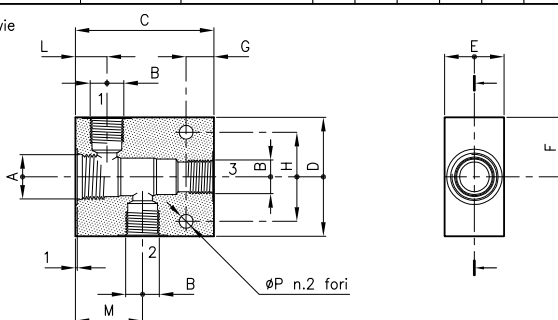
	Cod. ordinazione Corpi Alluminio	Cod. ordinazione Corpi Acciaio	Cavità valvola	Utilizzi	Scheda tecnica	
Corpo tipo LO - 2 vie 	10-LO-B05 18 144 100	10-LO-B05/FE 18 144 101	S 10/2	G 1/4 (B05)	16.010	
	20-LO-B05 28 144 104	20-LO-B05/FE 28 144 118	S 20/2	G 1/4 (B05)	16.010	
	20-LO-B06 28 144 101	20-LO-B06/FE 28 144 119	S 20/2	G 3/8 (B06)	16.010	
	28-LO-B05 28 144 128	28-LO-B05/FE 28 144 140	S 28/2	G 1/4 (B05)	16.010	
	28-LO-B06 28 144 142	28-LO-B06/FE 28 144 141	S 28/2	G 3/8 (B06)	16.010	
	30-LO-B06 38 144 101	30-LO-B06/FE 38 144 131	S 30/2	G 3/8 (B06)	16.010	
	30-LO-B08 38 144 103	30-LO-B08/FE 38 144 132	S 30/2	G 1/2 (B08)	16.010	
	32-LO-B05 38 144 140		S 32/2	G 1/4 (B05)	16.010	
	50-LO-B08 58 144 100	50-LO-B08/FE 58 144 124	S 50/2	G 1/2 (B08)	16.010	
	50-LO-B12 58 144 101	50-LO-B12/FE 58 144 125	S 50/2	G 3/4 (B12)	16.010	
	70-LO-B16 78 144 100	70-LO-B16/FE 78 144 114	S 70/2	G 1 (B16)	16.010	
	70-LO-B20 78 144 101	70-LO-B20/FE 78 144 115	S 70/2	G 1.1/4 (B20)	16.010	
	Corpo tipo C3 - 3 vie 	20-C3-B05 28 144 102	20-C3-B05/FE 28 144 120	S 20/3	G 1/4 (B05)	16.010
		20-C3-B06 28 144 103	20-C3-B06/FE 28 144 121	S 20/3	G 3/8 (B06)	16.010
		28-C3-B05 28 144 136	28-C3-B05/FE 28 144 143	S 28/3	G 1/4 (B05)	16.010
28-C3-B06 28 144 129		28-C3-B06/FE 28 144 144	S 28/3	G 3/8 (B06)	16.010	
30-C3-B06 38 144 102		30-C3-B06/FE 38 144 133	S 30/3	G 3/8 (B06)	16.010	
30-C3-B08 38 144 105		30-C3-B08/FE 38 144 134	S 30/3	G 1/2 (B08)	16.010	
50-C3-B08 58 144 102		50-C3-B08/FE 58 144 126	S 50/3	G 1/2 (B08)	16.010	
50-C3-B12 58 144 103		50-C3-B12/FE 58 144 127	S 50/3	G 3/4 (B12)	16.010	
70-C3-B16 78 144 102		70-C3-B16/FE 78 144 116	S 70/3	G 1 (B16)	16.010	
70-C3-B20 78 144 103		70-C3-B20/FE 78 144 117	S 70/3	G 1.1/4 (B20)	16.010	
Corpo tipo CC - 3 vie 		30-CC-B05 38 144 108		S 30/4	G 1/4 (B05)	16.011
		30-CC-B06 38 144 115	30-CC-B06/FE 38 144 135	S 30/4	G 3/8 (B06)	16.011
		30-CC-B08 38 144 116	30-CC-B08/FE 38 144 136	S 30/4	G 1/2 (B08)	16.011
	50-CC-B08 58 144 106	50-CC-B08/FE 58 144 128	S 50/4	G 1/2 (B08)	16.011	
	50-CC-B12 58 144 107	50-CC-B12/FE 58 144 129	S 50/4	G 3/4 (B12)	16.011	
	Corpo tipo C4 - 4 vie 	20-C4-B05 28 144 105	20-C4-B05/FE 28 144 122	S 20/4	G 1/4 (B05)	16.011
20-C4-B06 28 144 106		20-C4-B06/FE 28 144 123	S 20/4	G 3/8 (B06)	16.011	
28-C4-B05 28 144 145		28-C4-B05/FE 28 144 146	S 28/4	G 1/4 (B05)	16.011	
28-C4-B06 28 144 147		28-C4-B06/FE 28 144 124	S 28/4	G 3/8 (B06)	16.011	
30-C4-B06 38 144 100		30-C4-B06/FE 38 144 137	S 30/4	G 3/8 (B06)	16.011	
30-C4-B08 38 144 104		30-C4-B08/FE 38 144 138	S 30/4	G 1/2 (B08)	16.011	
50-C4-B08 58 144 104		50-C4-B08/FE 58 144 130	S 50/4	G 1/2 (B08)	16.011	
50-C4-B12 58 144 105		50-C4-B12/FE 58 144 131	S 50/4	G 3/4 (B12)	16.011	

Corpo tipo **LO - 2** vie



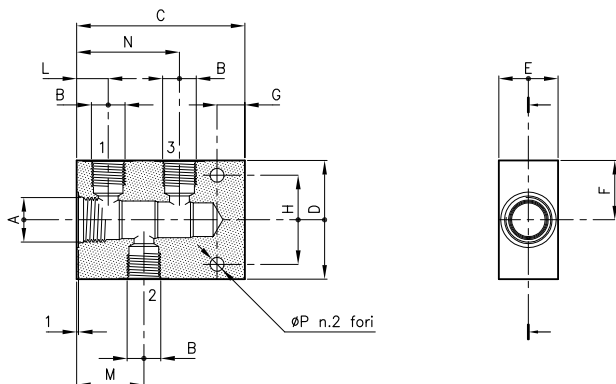
Serie	Alluminio	Acciaio	A	B	C	D	E	F	G	H	L	M	N	P
10	10-LO-B05	..-B05/FE	M 14x1.5	G 1/4 (B05)	40	40	25	27	10	30	12.5			7
	20-LO-B05	..-B05/FE	S 20/2	G 1/4 (B05)	50	45	30	30	14	35	14			7
20	20-LO-B06	..-B06/FE	M 18x1.5	G 3/8 (B06)	50	45	30	30	14	35	14			7
	28-LO-B05	..-B05/FE	S 28/3	G 1/4 (B05)	50	45	30	30	14	35	15			7
28	28-LO-B06	..-B06/FE	3/4-16 UNF	G 3/8 (B06)	50	45	30	30	14	35	15			7
	30-LO-B06	..-B06/FE	S 30/2	G 3/8 (B06)	50	50	30	35	14	40	16			7
30	30-LO-B08	..-B08/FE	M 22x1.5	G 1/2 (B08)	50	50	30	35	14	40	16			7
	32-LO-B05		M 20x1.5	G 1/4 (B05)	50	50	30	30	20	44	14			7
32	50-LO-B08	..-B08/FE	S 50/2	G 1/2 (B08)	70	70	45	45	14	55	22			9
	50-LO-B12	..-B12/FE	M 33x2	G 3/4 (B12)	70	70	45	45	14	55	22			9
50	70-LO-B16	..-B16/FE	S 70/2	G 1 (B16)	90	90	60	60	30	70	27			10.5
	70-LO-B20	..-B20/FE	M 42x2	G 1.1/4 (B20)	90	90	60	60	30	70	27			10.5

Corpo tipo **C3 - 3** vie



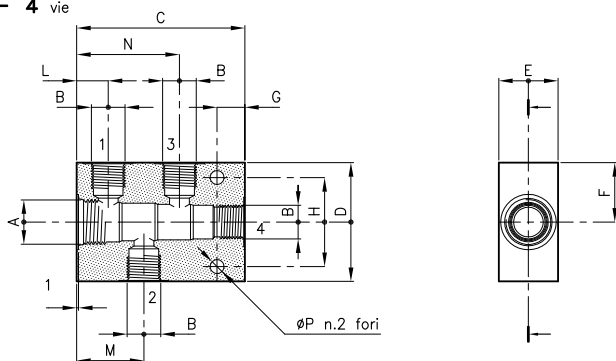
Serie	Alluminio	Acciaio	A	B	C	D	E	F	G	H	L	M	N	P
20	20-C3-B05	..-B05/FE	S 20/3	G 1/4 (B05)	60	60	30	30	14	35	14	29		7
	20-C3-B06	..-B06/FE	M 18x1.5	G 3/8 (B06)	60	60	30	30	14	35	14	29		7
28	28-C3-B05	..-B05/FE	S 28/3	G 1/4 (B05)	60	60	30	30	14	35	16	30		7
	28-C3-B06	..-B06/FE	3/4-16 UNF	G 3/8 (B06)	60	60	30	30	14	35	16	30		7
30	30-C3-B06	..-B06/FE	S 30/3	G 3/8 (B06)	70	60	30	30	14	45	16	34		7
	30-C3-B08	..-B08/FE	M 22x1.5	G 1/2 (B08)	75	70	35	35	14	45	16	34		7
50	50-C3-B08	..-B08/FE	S 50/3	G 1/2 (B08)	90	90	45	45	14	60	22	47		9
	50-C3-B12	..-B12/FE	M 33x2	G 3/4 (B12)	90	90	45	45	14	60	22	47		9
70	70-C3-B16	..-B16/FE	S 70/3	G 1 (B16)	120	120	60	60	25	90	27	58		10.5
	70-C3-B20	..-B20/FE	M 42x2	G 1.1/4 (B20)	120	120	60	60	25	90	27	58		10.5

Corpo tipo **CC - 3** vie (versione per divisori di flusso serie DCC)



Serie	Alluminio	Acciaio	A	B	C	D	E	F	G	H	L	M	N	P
30	30-CC-B05		S 30/4	G 1/4 (B05)	85	60	30	30	14	45	16	34	52	7
	30-CC-B06	..-B06/FE		G 3/8 (B06)	85	60	30	30	14	45	16	34	52	7
	30-CC-B08	..-B08/FE	M 22x1.5	G 1/2 (B08)	90	70	35	35	14	45	16	34	52	7
50	50-CC-B08	..-B08/FE	S 50/4	G 1/2 (B08)	115	90	45	45	14	60	22	47	72	9
	50-CC-B12	..-B12/FE	M 33x2	G 3/4 (B12)	115	90	45	45	14	60	22	47	72	9

Corpo tipo **C4 - 4** vie



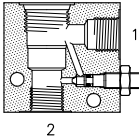
Serie	Alluminio	Acciaio	A	B	C	D	E	F	G	H	L	M	N	P
20	20-C4-B05	..-B05/FE	S 20/4	G 1/4 (B05)	74	60	30	30	14	35	14	29	44	7
	20-C4-B06	..-B06/FE	M 18x1.5	G 3/8 (B06)	74	60	30	30	14	35	14	29	44	7
28	28-C4-B05	..-B05/FE	S 28/4	G 1/4 (B05)	74	60	30	30	14	35	16	29	44	7
	28-C4-B06	..-B06/FE	3/4-16 UNF	G 3/8 (B06)	74	60	30	30	14	35	16	29	44	7
30	30-C4-B06	..-B06/FE	S 30/4	G 3/8 (B06)	85	60	30	30	14	45	16	34	52	7
	30-C4-B08	..-B08/FE	M 22x1.5	G 1/2 (B08)	90	70	35	35	14	45	16	34	52	7
50	50-C4-B08	..-B08/FE	S 50/4	G 1/2 (B08)	115	90	45	45	14	60	22	47	72	9
	50-C4-B12	..-B12/FE	M 33x2	G 3/4 (B12)	115	90	45	45	14	60	22	47	72	9
70			S 70/3											
			M 42x2											

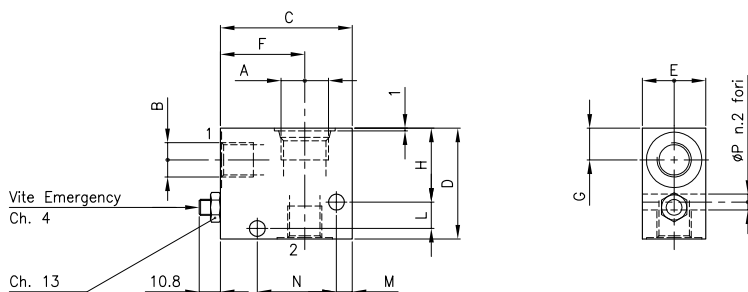
Questa serie di corpi, realizzati in lega di alluminio anodizzato, comprende tutte le versioni standard normalmente disponibili.

A richiesta possono essere forniti in acciaio zincato e con utilizzi diversi.

Per la scelta degli utilizzi fuori standard consultare Tabella 17.010 (Utilizzi tipo D - I - S).

CORPI A 2 VIE CON EMERGENZA

Corpo tipo	Tipo	Cavita' valvola	Utilizzi	Massa kg
Corpo tipo LO/E - 2 vie 	20-LO/E-B05	S 20/2	G 1/4 (B05)	0.230
	20-LO/E-B06	S 20/2	G 3/8 (B06)	0.230
	28-LO/E-B06	S 28/2	G 3/8 (B06)	0.230
	30-LO/E-B06	S 30/2	G 3/8 (B06)	0.270
	30-LO/E-B08	S 30/2	G 1/2 (B08)	0.270
	50-LO/E-B08	S 50/2	G 1/2 (B08)	0.610
	50-LO/E-B12	S 50/2	G 3/4 (B12)	0.610



Serie	Codice Ordinazione	A	B	C	D	E	F	G	H	L	M	N	P
20	20-LO/E-B05 (28 111 101)	S 20/2	G 1/4 (B05)	55	50	30	35	14	30	15	6	30	6.5
	20-LO/E-B06 (28 111 102)	M 18x1.5	G 3/8 (B06)	55	50	30	35	14	30	15	6	30	6.5
28		S 28/2											
	28-LO/E-B06 (28 111 100)	3/4-16 UNF	G 3/8 (B06)	55	50	30	35	14	30	15	6	30	6.5
30	30-LO/E-B06 (38 111 137)	S 30/2	G 3/8 (B06)	60	55	30	35	16	30	20	6	40	6.5
	30-LO/E-B08 (38 111 138)	M 22x1.5	G 1/2 (B08)	60	55	30	35	16	30	20	6	40	6.5
50	50-LO/E-B08 (58 111 123)	S 50/2	G 1/2 (B08)	70	70	45	45	22	48	15	6	50	6.5
	50-LO/E-B12 (58 111 124)	M 33x2	G 3/4 (B12)	70	70	45	45	22	48	15	6	50	6.5